

29-31 Potovens Lane, Outwood, Wakefield, West Yorkshire, WF3 3JE**AVAILABLE****SUBSTANTIAL RESIDENTIAL PROPERTY FOR SALE**

Suitable for a variety of uses

WITH COMMERCIAL POTENTIAL *subject to gaining the necessary planning consents
5 bedroomed property with two kitchens

Substantial double garage/workshop

Ample on site car parking

Part commercial use



1,611 SqFt (149.66 SqM)

Freehold £259,000 Freehold

Rateable Value 2017:**20 Union Street, Wakefield, West Yorkshire, WF1 3AE****AVAILABLE****GROUND FLOOR CORNER RETAIL UNIT**

Visible trading position

TO LET

Adjacent to Trinity Walk Shopping Centre

For further information contact our office on 01924 291500



Leasehold £8,000 Per Annum

527 SqFt (48.96 SqM)

Rateable Value 2017: £13,750**198, Huddersfield Road, Mirfield, West Yorkshire, WF14 8AT****AVAILABLE****DEVELOPMENT OPPORTUNITY**

Visible trading position

FOR SALE/TO LET

A building of grandeur

Commercial and/or residential opportunities

Located opposite Speights lighting and adjoins NHS Eye Pharmacy

For further information, contact our office on 02914 291500



Leasehold £18,500 - £47,250 Per Annum

3,749 SqFt (348.28 SqM)

Freehold £325,000

Rateable Value 2017:**33 Northgate, Wakefield, West Yorkshire, WF1 3BJ****AVAILABLE****A1, A2 and A3 use**

Situated within the 'Restaurant & Bar Quarter' of the City Centre

Excellent frontage onto Northgate

For further information, contact our office on 01924 291500



Leasehold £20,000 Per Annum

1,000 SqFt (92.9 SqM)

Rateable Value 2017:

1 Kirkgate, Wakefield, West Yorkshire, WF1 1HS**AVAILABLE****Prominent high street retail unit**

Ground and lower ground floor

To let

Highly visible corner plot onto Kirkgate and Teall Street

For further information contact our office on 01924 291500



Leasehold £35,000 Per Annum

1,033 SqFt (95.97 SqM)

Rateable Value 2017: £22,000**13-15 Market Place, Normanton, West Yorkshire, WF6 2AU****AVAILABLE****GROUND FLOOR FORMER ESTATE AGENTS**

Prominent Town Centre position

TO LET

Excellent frontage

Open plan retail area divided into 3 sections

Kitchen & Wc facilities

For further information, contact our office on 01924 291500



Leasehold £12,000 Per Annum

584 SqFt (54.25 SqM)

Rateable Value 2017: £8,900**34 Station Road, Ossett, West Yorkshire, WF5 8AD****UNDER OFFER****Generous ground and first floor seating areas**

Useful second floor storage

Located within the popular Town Centre of Ossett

Kitchen and food prep areas to the rear

Male & female Wc facilities

For further information, contact our office on 01924 291500



Leasehold £12,000 Per Annum

1,955 SqFt (181.62 SqM)

Rateable Value 2017: £11,000**35-37 Northgate, Wakefield, West Yorkshire, WF1 3BJ****UNDER OFFER****A1, A2 and A3 use**

Situated within the 'Restaurant & Bar Quarter' of the City Centre

Excellent frontage onto Northgate

Flexible accommodation to suit a tenants needs



Leasehold £40,000 - £60,000 Per Annum

2,000 - 4,000 SqFt (185.8 - 371.6 SqM)

Rateable Value 2017: £61,000

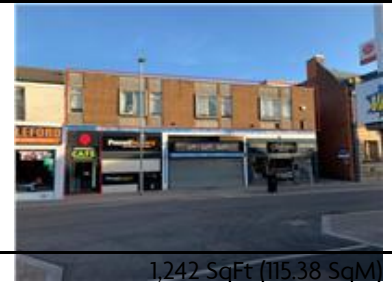
First Floor, 38 Carlton Street, Castleford, West Yorkshire, WF10 1BA**UNDER OFFER****FIRST FLOOR FORMER CAFE**

Would suit a variety of uses subject to planning consents

TO LET***Suitable for alternative uses**

Situated within the heart of Castleford City Centre

For further information contact our office on 01924 291500



1,242 SqFt (115.38 SqM)

Leasehold £7,800 Per Annum

Rateable Value 2017:**Development Site @ George Street/Thornhill Street, Wakefield, West Yorkshire, WF1 1NL****AVAILABLE****Freehold development site and properties**

Modern office building totalling 11,600 sq ft

for sale with vacant possession

Former public house & restaurant totalling 10,000 sq ft

Level Site with existing Planning Permission for Offices and

Excellent City Centre location

For further information, contact our office on 01924 291500



21,600 SqFt (2,006.64 SqM)

Freehold £1,950,000 Freehold

Rateable Value 2017:**32 & 34 Northgate, Wakefield, West Yorkshire, WF1 3AN****AVAILABLE****PROMINENT CORNER UNIT**

Prominent trading position

TO LET

Situated close to Bull Ring, bus station and Trinity Walk Shopping Centre

Would suit a variety of uses subject to consents

Wc facilities and rear yard

For further information contact our office on 01924 291500



1,630 SqFt (151.43 SqM)

Leasehold £26,000 Per Annum

Rateable Value 2017: £29,250**Unit 1 & 2, Central Buildings, Market Hall, Normanton, West Yorkshire, WF6****AVAILABLE****2AT****Prominent high street retail unit**

Situated within the heart of Normanton Town Centre

To Let

1,890 sq ft of ground floor retail space

Wc, kitchen and office facilities

First floor accommodation available by separate negotiation

For further information contact our office on 01924 291500



2,339 SqFt (217.29 SqM)

Leasehold £18,000 Per Annum

Rateable Value 2017:

150-152 Westgate, Wakefield, West Yorkshire, WF2 9SR**AVAILABLE****FORMER ESTATE AGENTS WITH CAR PARKING**

Characterful, 2 storey property

TO LET/MAY SELL

Prominent main road position

Approx. 4 private car parking spaces to the rear

Layby car parking to the front

Traditional timber shop front



Leasehold £12,000 Per Annum

891 SqFt (82.77 SqM)

Freehold £150,000 Offers in the region of

Rateable Value 2017: £8,800**360 Leeds Road, Outwood, Wakefield, WF1 2JA****AVAILABLE****PRIVATE TREATMENT ROOM TO LET**

Fully furnished

Shared reception & kitchen facilities

All inclusive monthly rental

Ready for immediate occupation

Please contact our office for further information



Leasehold £250.00 Per month

47 SqFt (4.37 SqM)

Rateable Value 2017:**Radcliffe House & 10 Bull Ring, Wakefield, West Yorkshire, WF1 3BN****UNDER OFFER****MIXED RETAIL/OFFICE PROPERTY**

TO LET AS A WHOLE OR SEPARATELY

Three floors of City Centre office space

Retail premises with main roadside frontage

Available from 672 sq ft to 4,247 sq ft

City Centre car parking available at an additional cost



Leasehold £6,500 - £50,000 Per Annum

707 - 4,923 SqFt (65.68 - 457.35 SqM)

Rateable Value 2017:**8 Little Westgate, Wakefield, West Yorkshire, WF1 1JY****AVAILABLE****PRIME SHOP UNIT TO LET**

Located within the heart of Wakefield City Centre

Useful 1st and 2nd floor storage

Traditional Style Shop Front



Leasehold £12,000 Per Annum

362 SqFt (33.63 SqM)

Rateable Value 2017: £11,500

2-6 Albion Court, Wakefield, West Yorkshire, WF1 1BD**AVAILABLE**

Landmark Bar Property

Excellent Location

Unique Premises

Recently Refurbished



Leasehold On Application

1,929 SqFt (179.2 SqM)

Rateable Value 2017: £44,000**21 Sagar Street, Castleford, West Yorkshire, WF10 1AG****AVAILABLE**

Prominent Retail Premises

Spacious ground floor retail area

To Let

Would suit a variety of uses subject to planning consents

Shared kitchen and Wc facilities

Situated within the heart of Castleford Town Centre

For further information contact our office on 01924 291500



Leasehold £6,000 Per Annum

600 SqFt (55.74 SqM)

Rateable Value 2017: £3,900**45 Northgate, Wakefield, West Yorkshire, WF1 3BH****AVAILABLE**

REFURBISHED RETAIL UNIT

Broadly rectangular retail space

WC facilities

A new modern aluminium shop front

Suspended ceiling, full rewire, LED lighting and air conditioning

May qualify for a substantial small business rates relief discount.



Leasehold £15,000 Per Annum

552 SqFt (51.28 SqM)

Rateable Value 2017: £12,750**15A Little Westgate, Wakefield, West Yorkshire, WF1 1JZ****AVAILABLE**

GROUND FLOOR, NEWLY REFURBISHED RETAIL UNIT TO LET

City centre location

Good loading access with one parking space

Would suit a variety of uses subject to planning



Leasehold £15,000 Per Annum

601 SqFt (55.83 SqM)

Rateable Value 2017: £19,250

6-8 High Street, Normanton, West Yorkshire, WF6 2AB**AVAILABLE****PROMINENT HIGH STREET RETAIL UNIT TO LET** Ancillary first floor storage

Window display

Suitable for a variety of users

May divide

In close proximity to motorway network



Leasehold On Application

2,495 SqFt (231.79 SqM)

Rateable Value 2017: £20,750**65 Minsthorpe Lane, South Elmsall, WF9 2PH****AVAILABLE****FREEHOLD RETAIL PREMISES**

Additional first floor suitable for flat conversion

FORMER HAIR SALON - FOR SALE

Car parking to the rear

Would suit a variety of uses subject to planning

Very visible trading location

Few minutes away from South Elmsall town centre



1,051 SqFt (97.64 SqM)

Freehold £195,000 Freehold

Rateable Value 2017: £4,650**17 Kirkgate, Wakefield, West Yorkshire, WF1 1HS****AVAILABLE****CITY CENTRE RETAIL UNIT**

With upper parts

FOR SALE/MAY LET

Useful storage area on first floor

Electronic security shutter to the front

Adjacent to new Halifax Bank Plc

Town Centre location within walking distance of both bus and railway stations and both Ridings and Trinity Shopping Centres



Leasehold £12,000 Per Annum

1,469 SqFt (136.47 SqM)

Freehold £150,000 Freehold

Rateable Value 2017: £22,000

15 Little Westgate, Wakefield, West Yorkshire, WF1 1JZ**AVAILABLE****GROUND FLOOR NEWLY REFURBISHED RETAIL UNIT**

good access for loading with one parking space

would suit a variety of uses

City Centre location



Leasehold £25,000 Per Annum

1,118 SqFt (103.86 SqM)

Rateable Value 2017: £30,500**7/17 Exchange Street, Normanton, WF6 2AA****AVAILABLE****SUBSTANTIAL TOWN CENTRE**

Open plan

OFFICE SPACE TO LET

Ready for immediate occupation

Electric heating and suspended ceiling

Ideal for variety of uses

Please contact our office for further information



Leasehold £12,000 Per Annum

1,429 SqFt (132.75 SqM)

Rateable Value 2017: £7,200**15 Northgate, Wakefield, West Yorkshire, WF1 1HD****AVAILABLE****PRIME RETAIL UNIT TO LET**

Superb location adjoining Costa Coffee and Paddy Power

Very generous first floor sales area

Flexible open planned space

Close to Bull Ring and the Cathedral

Would prove ideal for hair or beauty salon



Leasehold £25,000 Per Annum

1,576 SqFt (146.41 SqM)

Rateable Value 2017: £24,750**Former Palace Bingo, Station Lane, Featherstone, WF7 5BJ****AVAILABLE****TOWN CENTRE DEVELOPMENT SITE**

With planning permission for 4 town houses, 4 retail units and 6 apartments

FREEHOLD FOR SALE

Approx 0.27 acres

The site can be identified by our for sale board

main road location

Please contact our office for further information



0.27 Acres (0.11 Hectares)

Freehold £275,000 Freehold

Rateable Value 2017:

Ossett Health Centre , New Street, Ossett, WF5 8AG**UNDER OFFER****NHS HEALTH CENTRE FOR SALE**

Superb position in the centre of Ossett

Excellent redevelopment potential

Site area 1.5 acres

Please call our office for further information



1.5 Acres (0.61 Hectares)

Freehold £1,500,000 Freehold

Rateable Value 2017:**Woodhead House, Car Parking Spaces, 8-10 Providence Street, Wakefield, WF1****AVAILABLE****3BG****CITY CENTRE CONTRACT CAR PARKING**

Single and Tandem spaces available

Flexible licence agreements

3 locations available

Quarterly rents

Please call for availability



Leasehold £1,260 Per Annum

1 - 2 Parking Space (1 - 2)

Rateable Value 2017:**143 & 143a Wakefield Road, Morley, Leeds, LS27 7HH****AVAILABLE****MIXED USE DEVELOPMENT OPPORTUNITY**

Plus basement store and rear car parking

FOR SALE

4 bedroomed house previously converted in 5 room bedsit

Retail to the ground floor previously trading as beauty rooms

Visible location

Please contact our office for viewing



2,344 SqFt (217.76 SqM)

Freehold £275,000 Freehold

Rateable Value 2017: £7,400**10 Market Street, Wakefield, WF1 1DH****AVAILABLE****UNIQUE CREATIVE SPACE TO LET**

Flexible space

Male & female toilet facilities

Excellent city centre location

Car parking to the front

Suitable for a variety of uses



6,000 SqFt (557.4 SqM)

Leasehold £35,000 Per Annum

Rateable Value 2017: £32,500

7 Bridge Street, Pontefract, WF8 1PG**UNDER OFFER****CORNER RETAIL UNIT TO LET / MAY SELL**

Extensive window display

Broadly open plan retail space with upper parts

Currently utilised as a café/catering business

Kitchen & Wc facilities

Please contact our office for further information



Leasehold £19,000 Per Annum

1,502 SqFt (139.54 SqM)

Freehold £250,000 Offers in the region of

Rateable Value 2017: £20,250**1 Foundry Street, Dewsbury, Kirklees, WF13 1QH****AVAILABLE****TOWN CENTRE SHOP UNIT TO LET/MAY SELL**

With first floor storage

Electric security shutters and aluminium shop front

Fire and security alarms

Suspended ceilings and low energy LED lighting

Other nearby traders include Greggs, Subway, British Heart Foundation, Age UK, Boots Opticians, Lloyds Bank and a variety of local



Leasehold £15,000 Per Annum

861 SqFt (79.99 SqM)

Rateable Value 2017: £9,900**47 Northgate, Wakefield, WF1 3BH****AVAILABLE****CITY CENTRE RETAIL UNIT TO LET**

Useful upper parts

Prominent main road position

Please contact our office for further information



Leasehold £18,000 Per Annum

1,325 SqFt (123.09 SqM)

Rateable Value 2017: £14,750**10 Marygate, Wakefield, WF1 1NX****AVAILABLE****CITY CENTRE RETAIL UNIT TO LET**

Very prominent main road position

situated just off the main shopping precinct

Flexible terms

Ground floor sales area with useful upper parts



Leasehold £11,000 Per Annum

384 - 685 SqFt (35.67 - 63.64 SqM)

Rateable Value 2017: £10,000

84 Barnsley Road, South Kirkby, Pontefract, WF9 3QE**AVAILABLE****GROUND FLOOR RETAIL UNIT TO LET**

Prominent main road position

Car parking to front

Security shutter

Very well presented internally

Ready for immediate occupation



Leasehold £8,000 Per Annum

806 SqFt (74.88 SqM)

Rateable Value 2017: £4,750**14-16 Marygate, Wakefield, WF1 1NX****AVAILABLE****PROMINENT RETAIL UNIT TO LET**

With useful upper parts

Excellent display window

Ready for immediate occupation

Close to all city centre amenities

Please contact our office for further information



Leasehold £17,000 Per Annum

1,491 SqFt (138.51 SqM)

Rateable Value 2017: £23,750**260 Dewsbury Road, Wakefield, West Yorkshire, WF2 9BY****AVAILABLE****Substantial retail premises plus 3 bedroomed house**

Fully refurbished to include full gas central heating

Adjacent to Morrisons and McDonalds

Would suit a variety of specialist users

Substantial car parking to the front and side

Five minutes drive to Junction 40 of the M1 motorway



Leasehold £25,000 Per Annum

2,923 SqFt (271.55 SqM)

Rateable Value 2017: £16,250**28 Wood Street, Wakefield, West Yorkshire, WF1 2ED****AVAILABLE****MODERN RETAIL UNIT TO LET**

NEWLY REFURBISHED

Ground floor only

Large display window

Visible trading position

Please contact our office for further information



Leasehold £12,000 Per Annum

777 SqFt (72.18 SqM)

Rateable Value 2017: £18,000

54 Northgate, Wakefield, Yorkshire, WF1 3AN**AVAILABLE****RETAIL/OFFICE UNIT TO LET**

With A1 and A2 planning

Modern aluminium shop front

Air con and gas central heating

Wc and kitchen facilities

Please contact our office for further information



Leasehold £18,000 Per Annum

784 SqFt (72.83 SqM)

Rateable Value 2017: £12,500**12 Cross Street, Wakefield, Yorkshire, WF1 3BW****AVAILABLE****MODERN SHOP UNIT TO LET**

Good display frontage

Ready for immediate occupation

Security alarm and security shutter to the front

Close to city centre amenities and within walking distance of both railway and bus station

Please contact our office for further information



Leasehold £11,000 Per Annum

693 SqFt (64.38 SqM)

Rateable Value 2017: £16,000**44 - 46 Northgate, Wakefield, West Yorkshire, WF1 3AN****AVAILABLE****SUPERB CITY CENTRE RETAIL UNIT**

Prominent double fronted retail unit

***Ideal for a mini-supermarket**

Suitable for a wide variety of A1 retail uses

Open plan layout

Other nearby traders include Red Rock Recruitment, Manning Stainton, Quabana restaurant and Clark & Partners.



Leasehold £28,000 Per Annum

1,741 SqFt (161.74 SqM)

Rateable Value 2017: £28,750**5, Wood Street, Wakefield, West Yorkshire, WF1 2EL****AVAILABLE****GROUND FLOOR RETAIL UNIT**

Currently undergoing refurbishment works

Would be suitable for a variety of uses

Substantial basement storage

Prominent trading position

please contact our office for further information



Leasehold On Application

759 SqFt (70.51 SqM)

Rateable Value 2017: £13,500

Calder House, Healey Road, Ossett, Yorkshire, WF5 8LN**AVAILABLE****SUPERB OFFICE ACCOMMODATION WITH APPROX. 22 CAR PARKING SPACES**

Detached victorian building with approx. 22 car parking spaces

TO LET/MAY SELL

Three phase electricity, comfort cooling and UPVC double glazing

Useful basement area

Located just of Healey Road close to Ossett Town Centre

Please contact our office for more information



Leasehold £30,000 Per Annum

2,578 SqFt (239.5 SqM)

Freehold £375,000 Freehold

Rateable Value 2017: £22,250**1 Cross Square, Wakefield, West Yorkshire, WF1 1PQ****AVAILABLE****PRIME CORNER RETAIL UNIT**

Situated amongst the "Cafe Culture"

TO LET

Traditional hardwood shop front giving superb window frontage

Flexible space with gallery area

Close to the entrance of Wakefield Cathedral

Benefits from A1, A2 & A3 Planning



Leasehold £22,500 Per Annum

712 - 1,486 SqFt (66.14 - 138.05 SqM)

Rateable Value 2017: £15,250**38 Wood Street, Wakefield, West Yorkshire, WF1 2HB****AVAILABLE****RETAIL UNIT TO LET**

With A1 and A2 planning permission

Would suit various uses

Kitchen & Wc facilities to the rear



Leasehold £12,000 Per Annum

720 SqFt (66.89 SqM)

Rateable Value 2017: £9,700**20 Commercial Street, Batley, West Yorkshire, WF17 5HH****AVAILABLE****PROMINENT TOWN CENTRE RETAIL UNIT**

Well presented

TO LET

Ample free parking available

Busy town centre trading position

Ready for immediate occupation

Convenient for motorway network



Leasehold £7,500 Per Annum

1,127 SqFt (104.7 SqM)

Rateable Value 2017: £5,300

10 Little Westgate, Wakefield, Yorkshire, WF1 1JY**AVAILABLE****PRIME CITY CENTRE RETAIL UNIT**

Plus upper parts

TO LET

Fitted out to a high standard

Broadly open plan space

Staff kitchen, Wc facilities plus additional storage

For further information, contact our office on 01924 291500



Leasehold £15,000 Per Annum

694 SqFt (64.47 SqM)

Rateable Value 2017: £12,000**15 Cross Street, Wakefield, WF1 3BW****UNDER OFFER****RETAIL UNIT TO LET**

Prominent corner position with good display window

Would suit specialist trader

Ready for immediate occupation

Kitchen area to the rear

Well located for Wakefield`s new development



Leasehold £9,000 Per Annum

858 SqFt (79.71 SqM)

Rateable Value 2017: £13,500**14 Little Westgate, Wakefield, WF1 1JY****AVAILABLE****PRIME RETAIL UNIT**

Open plan ground floor sales area

TO LET

Useful first and second floor storage space

Traditional style shop front with modern aluminium fittings

Situated on the main shopping precinct

Good footflow



Leasehold £16,500 Per Annum

381 - 980 SqFt (35.39 - 91.04 SqM)

Rateable Value 2017: £15,250**22 Commercial Street, Batley, Yorkshire, WF17 5HH****UNDER OFFER****VERY VISIBLE RETAIL UNIT**

Prominent corner position

Useful basement stores

First floor

Remote security shutter



Leasehold £7,000 Per Annum

628 SqFt (58.34 SqM)

Rateable Value 2017: £3,450

41 Northgate, Wakefield, West Yorkshire, WF1 3BJ**AVAILABLE****SUPERB CITY CENTRE RETAIL UNIT**

Additional upper parts available

TO LET

Honeycomb security shutters

Prominently situated on Northgate

With A1,A2 and A3 planning permission

Please contact our office for further information



Leasehold £15,000 Per Annum

685 SqFt (63.64 SqM)

Rateable Value 2017: £17,750**8a Caldervale Road, Wakefield, West Yorkshire, WF1 5PE****AVAILABLE****RETAIL SHOWROOM/TRADE COUNTER UNIT TO LET**

First floor office accommodation

Ground floor retail space with roller shutter door

Concrete floor

Close to city centre

For further information, contact our office on 01924 291500



Leasehold £16,000 Per Annum

2,241 SqFt (208.19 SqM)

Rateable Value 2017: £10,000**16 Cross Street, Wakefield, West Yorkshire, WF1 3BW****AVAILABLE****CITY CENTRE SHOP UNIT TO LET**

Very prominent location

With A1 & A2 planning consent

Offers good quality retail space with rear storage/ office and toilet facilities

Car parking available at an additional cost

Please contact our office for further information



Leasehold £11,000 Per Annum

836 SqFt (77.66 SqM)

Rateable Value 2017: £17,750**26 Leeds Road, Cutsyke, Castleford, WF10 5HA****UNDER OFFER****PROMINENT RETAIL UNIT FOR SALE**

Available with vacant possession

Prominent roadside location

Former hair/beauty salon but would suit a variety of users

Close to motorway and Junction 32 Shopping outlet

Please note the land to the rear is not included



230 SqFt (21.37 SqM)

Freehold £32,000 Freehold

Rateable Value 2017: £1,700

6 Silver Street, Wakefield, West Yorkshire, WF1 1UY**AVAILABLE****FORMER HAIR SALON**

Ground floor retail space with upper parts

TO LET

Very visible trading position

Good pedestrian footflow

Other nearby traders also include The Argos Superstore, 925 Silver Company, Jessops Photography and Present Days

Good access to all town centre amenities.



Leasehold £11,000 Per Annum

398 SqFt (36.97 SqM)

Rateable Value 2017: £6,300**20 Wood Street, Wakefield, West Yorkshire, WF1 2ED****AVAILABLE****FREEHOLD SHOP/OFFICES FOR SALE/MAY LET**

3 Story accommodation

With first and second floor offices

Very prominent trading position

Would ideally suit any user requiring offices with a ground floor retail presence

Please contact our office for further information



Leasehold On Application

558 SqFt (51.84 SqM)

Freehold £110,000 Freehold

Rateable Value 2017: £4,850**70 Northgate, Wakefield, Yorkshire, WF1 3AP****AVAILABLE****PROMINENT RETAIL/OFFICE UNIT**

Currently trading as an estate agents

TO LET

Ground floor with first and second floor storage/ office

Situated within a prominent position within the City Centre

Other nearby occupiers and services include Manning Stainton Estate Agents, Lindley Simpson Estate Agents, Qubana Restaurant,

Contact our office for further information



Leasehold £24,000 Per Annum

1,525 SqFt (141.67 SqM)

Rateable Value 2017: £18,250**69 Doncaster Road, Wakefield, West Yorkshire, WF1 5DX****AVAILABLE****GROUND FLOOR SHOP**

Recently undergone a full refurbishment

TO LET

Decorated to a modern standard

Prominent position

Visible trading location

Easy access to motorway network



Leasehold £6,000 Per Annum

312 SqFt (28.98 SqM)

Rateable Value 2017: £2,750

14 Cross Street, Wakefield, WF1 3BW

AVAILABLE

QUALITY MODERN RETAIL UNIT TO LET

Broadly open plan with kitchen and WC facilities

Excellent window display

Popular restaurant location

Can be combined with 12 Cross Street to create a larger unit

Car parking available on a separate licence



Leasehold £22,000 Per Annum

1,500 SqFt (139.35 SqM)

Rateable Value 2017: £32,750