

**29-31 Potovens Lane, Outwood, Wakefield, West Yorkshire, WF3 3JE****AVAILABLE****SUBSTANTIAL RESIDENTIAL PROPERTY FOR SALE**

Suitable for a variety of uses

**WITH COMMERCIAL POTENTIAL** \*subject to gaining the necessary planning consents  
5 bedroomed property with two kitchens

Substantial double garage/workshop

Ample on site car parking

Part commercial use



1,611 SqFt (149.66 SqM)

Freehold £259,000 Freehold

**Rateable Value 2017:****Unit F2, Trinity Buildings, Caldervale Road, Wakefield, WF1 5PE****AVAILABLE****FIRST FLOOR OFFICES TO LET**

Flexible accommodation

Kitchen &amp; Wc facilities

Close to Wakefield city centre

Suitable for a variety of uses

Contact our office for further information



Leasehold £12,000 Per Annum

1,201 SqFt (111.57 SqM)

**Rateable Value 2017:****1 York Street, Castleford, West Yorkshire, WF10 1RB****AVAILABLE****SELF CONTAINED PREMISES TO LET / FOR SALE**

Suitable for a variety of uses subject to planning

**\*WITH CAR PARKING AND LIFT**

On site car parking

Wc and kitchen facilities



5,560 SqFt (516.52 SqM)

Leasehold £35,000 Per Annum

Freehold £425,000 Freehold

**Rateable Value 2017:** £26,500**First Floor, 12 Appleton Court, Calder Park, Wakefield, West Yorkshire, WF2****AVAILABLE****7AR****First Floor office suite with car parking**

All inclusive rent

**To Let**

3 car parking spaces

Popular location just off Junction 39 of the M1

Shared use of the boardroom, kitchen and Wc facilities

For further information, contact our office on 01924 291500



Leasehold £12,500 Per Annum

574 SqFt (53.32 SqM)

**Rateable Value 2017:**

**198, Huddersfield Road, Mirfield, West Yorkshire, WF14 8AT**

**AVAILABLE**

**DEVELOPMENT OPPORTUNITY**

Visible trading position

**FOR SALE/TO LET**

A building of grandeur

Commercial and/or residential opportunities

Located opposite Speights lighting and adjoins NHS Eye Pharmacy

For further information, contact our office on 02914 291500



3,749 SqFt (348.28 SqM)

Leasehold £18,500 - £47,250 Per Annum

Freehold £325,000

**Rateable Value 2017:**

**33 Northgate, Wakefield, West Yorkshire, WF1 3BJ**

**AVAILABLE**

**A1, A2 and A3 use**

Situated within the 'Restaurant & Bar Quarter' of the City Centre

Excellent frontage onto Northgate

For further information, contact our office on 01924 291500



1,000 SqFt (92.9 SqM)

Leasehold £20,000 Per Annum

**Rateable Value 2017:**

**13-15 Market Place, Normanton, West Yorkshire, WF6 2AU**

**AVAILABLE**

**GROUND FLOOR FORMER ESTATE AGENTS**

Prominent Town Centre position

**TO LET**

Excellent frontage

Open plan retail area divided into 3 sections

Kitchen & Wc facilities

For further information, contact our office on 01924 291500



584 SqFt (54.25 SqM)

Leasehold £12,000 Per Annum

**Rateable Value 2017:** £8,900

**Cinema House, Doncaster Road, Wakefield, West Yorkshire, WF1 5HL**

**AVAILABLE**

**FLEXIBLE FIRST FLOOR OFFICE SPACE TO LET**

Individual offices with shared reception, kitchen & Wc facilities

On site car parking

For further information, contact our office on 01924 291500



147 - 1,262 SqFt (13.66 - 117.24 SqM)

Leasehold £5.00 Per Sq ft

**Rateable Value 2017:**

**34 Station Road, Ossett, West Yorkshire, WF5 8AD****UNDER OFFER**

Generous ground and first floor seating areas

Useful second floor storage

Located within the popular Town Centre of Ossett

Kitchen and food prep areas to the rear

Male &amp; female Wc facilities

For further information, contact our office on 01924 291500



Leasehold £12,000 Per Annum

1,955 SqFt (181.62 SqM)

**Rateable Value 2017:** £11,000**Unit 16, Monckton Road Industrial Estate, Wakefield, West Yorkshire, WF2****AVAILABLE****7AL****GROUND AND FIRST FLOOR OFFICES TO LET**

Located within the popular Monckton Road Industrial Estate

Car parking to the front

Close proximity to the M1 Motorway

Kitchen and Wc facilities

Further information contact our office on 01924 291500



Leasehold £10,000 Per Annum

1,473 SqFt (136.84 SqM)

**Rateable Value 2017:** £13,750**35-37 Northgate, Wakefield, West Yorkshire, WF1 3BJ****UNDER OFFER****A1, A2 and A3 use**

Situated within the 'Restaurant &amp; Bar Quarter' of the City Centre

Excellent frontage onto Northgate

Flexible accommodation to suit a tenants needs



Leasehold £40,000 - £60,000 Per Annum

2,000 - 4,000 SqFt (185.8 - 371.6 SqM)

**Rateable Value 2017:** £61,000**21a/b Hardy Croft, Wakefield, West Yorkshire, WF1 4DN****AVAILABLE****Workshop/store with offices to let**

Very visible location

Wc and kitchenette facilities

Roller shutter door

Secure yard

For further information, contact our office on 01924 291500



Leasehold £12,000 Per Annum

1,398 SqFt (129.87 SqM)

**Rateable Value 2017:** £12,400

**The Studio, Clarion Street, Wakefield, West Yorkshire, WF1 5EX****AVAILABLE**

Available to let with immediate effect

Contemporary fixtures and fittings

Car parking to the front

Gas central heating

Located off Doncaster Road

For further information contact our office on 01924 291500



Leasehold £12,000 Per Annum

1,390 SqFt (129.13 SqM)

**Rateable Value 2017:** £11,500**First Floor, 38 Carlton Street, Castleford, West Yorkshire, WF10 1BA****UNDER OFFER**

FIRST FLOOR FORMER CAFE

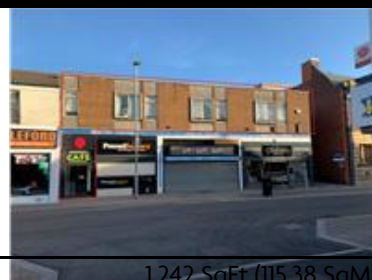
Would suit a variety of uses subject to planning consents

TO LET

**\*Suitable for alternative uses**

Situating within the heart of Castleford City Centre

For further information contact our office on 01924 291500



1,242 SqFt (115.38 SqM)

Leasehold £7,800 Per Annum

**Rateable Value 2017:****Development Site @ George Street/Thornhill Street, Wakefield, West Yorkshire. WF1 1NL****AVAILABLE**

Freehold development site and properties

Modern office building totalling 11,600 sq ft

for sale with vacant possession

Former public house &amp; restaurant totalling 10,000 sq ft

Level Site with existing Planning Permission for Offices and

Excellent City Centre location

For further information, contact our office on 01924 291500



21,600 SqFt (2,006.64 SqM)

Freehold £1,950,000 Freehold

**Rateable Value 2017:****Suite 1 & 2 Bullring House, Northgate, Wakefield, West Yorkshire, WF1 3BJ****AVAILABLE**

PRESTIGIOUS OFFICE SPACE

Open plan office with potential to divide

TO LET

Kitchen and Wc facilities

Entrance Foyer and lift

Prominent City Centre location

For further information contact our office on 01924 291500



2,233 SqFt (207.45 SqM)

Leasehold £25,000 Per Annum

**Rateable Value 2017:** £12,750



### Ground Floor 4 Dearne Valley Industrial Estate, Park Mill Way, Clayton West, Huddersfield. HD8 9XI

**AVAILABLE**

Minimum term 6 months

Additional office space available

Full gas central heating

Ample on site car parking

Close proximity to M1 motorway

Please contact our office for further information



Leasehold £1,000.00 Per month

1,438 SqFt (133.59 SqM)

**Rateable Value 2017:**

### 32 & 34 Northgate, Wakefield, West Yorkshire, WF1 3AN

**AVAILABLE****PROMINENT CORNER UNIT**

Prominent trading position

**TO LET**

Situated close to Bull Ring, bus station and Trinity Walk Shopping Centre

Would suit a variety of uses subject to consents

Wc facilities and rear yard

For further information contact our office on 01924 291500



Leasehold £26,000 Per Annum

1,630 SqFt (151.43 SqM)

**Rateable Value 2017:** £29,250

### 8-10 South Parade, Wakefield, West Yorkshire, WF1 1LR

**AVAILABLE****Prestigious Grade II Listed Georgian office space now being let after refurbishment**

Ample on site car parking

Available on flexible terms

Immediate occupation

Variety of sized offices

For further information contact our office on 01924 291500



Leasehold £10.00 Per Sq ft

120 - 7,334 SqFt (11.15 - 681.33 SqM)

**Rateable Value 2017:**

### 26 Bond Street, Wakefield, West Yorkshire, WF1 2QP

**AVAILABLE****OFFICE SUITES WITH 3-4 CAR PARKING SPACES**

3-4 car parking spaces to the rear

**TO LET**

2 ground floor office suites

Excellent roadside frontage

Prominent Wakefield City Centre location

For further information contact our office on 01924 291500



Leasehold £6,500 Per Annum

458 SqFt (42.55 SqM)

**Rateable Value 2017:**

**150-152 Westgate, Wakefield, West Yorkshire, WF2 9SR****AVAILABLE****FORMER ESTATE AGENTS WITH CAR PARKING**

Characterful, 2 storey property

**TO LET/MAY SELL**

Prominent main road position

Approx. 4 private car parking spaces to the rear

Layby car parking to the front

Traditional timber shop front



Leasehold £12,000 Per Annum

891 SqFt (82.77 SqM)

Freehold £150,000 Offers in the region of

**Rateable Value 2017:** £8,800**Radcliffe House & 10 Bull Ring, Wakefield, West Yorkshire, WF1 3BN****UNDER OFFER****MIXED RETAIL/OFFICE PROPERTY**

TO LET AS A WHOLE OR SEPARATELY

Three floors of City Centre office space

Retail premises with main roadside frontage

Available from 672 sq ft to 4,247 sq ft

City Centre car parking available at an additional cost



Leasehold £6,500 - £50,000 Per Annum

707 - 4,923 SqFt (65.68 - 457.35 SqM)

**Rateable Value 2017:****Trinity Space Centre, Waldorf Way, Wakefield, West Yorkshire, WF2 8DH****AVAILABLE****OFFICES TO LET**

325 Sq Ft (30.19 sq m)

Designated car parking

Flexible terms

Central heating &amp; air-con

Shared Kitchen facility



Leasehold £525.00 Per month

325 SqFt (30.19 SqM)

**Rateable Value 2017:****Part 1st Floor, 2 Navigation Walk, Wakefield, West Yorkshire, WF1 5RH****AVAILABLE****Modern office facilities**

Sought-after waterfront location

Three car parking spaces

3,155 sq ft (291.10 sq m)



Leasehold £35,000 Per Annum

3,155 SqFt (293.1 SqM)

**Rateable Value 2017:**

**20 Rishworth Street, Wakefield, West Yorkshire, WF1 3BY****UNDER OFFER****SELF CONTAINED PERIOD OFFICES**

Visible city centre position

**FOR SALE**

Ground and first floor open plan accommodation

Useful basement and attic storage space

Opposite the Rishworth Street multistorey car park

Grade II Listed



Leasehold On Application

680 SqFt (63.17 SqM)

Freehold £100,000

**Rateable Value 2017:** £4,800**The Portacabin , Moor Park Business Centre, Thornes Moor Road, WF2 8NZ****AVAILABLE****Carpeted portacabin with WC facilities and ample parking**

Electric heating

Close proximity to the M1 Network

Please call our office to arrange for more information and to arrange a viewing



Leasehold £100.00 Per week

278 SqFt (25.83 SqM)

**Rateable Value 2017:****Cinema House, Doncaster Road, Wakefield, West Yorkshire, WF1 5HL****AVAILABLE****FLEXIBLE OFFICE AND WAREHOUSE SPACE FOR SALE**

13 offices with shared reception, kitchen &amp; Wc facilities

Superb heated warehouse extending to approx. 2670 sq ft

Ample on site car parking



5,578 SqFt (518.2 SqM)

Freehold £415,000 Offers Invited

**Rateable Value 2017:****Units 1 & 2, Milner Way, Ossett, West Yorkshire, WF5 9JE****AVAILABLE****EXCELLENT INDUSTRIAL INVESTMENT FOR SALE**

Potential for growth

Convenient location close to junction 40 of the M1 motorway

Rental income £74,255 per annum

Established tenants

Please contact our office for further information



17,803 SqFt (1,653.9 SqM)

Freehold £800,000 Freehold

**Rateable Value 2017:**

**45 Northgate, Wakefield, West Yorkshire, WF1 3BH****AVAILABLE****REFURBISHED RETAIL UNIT**

Broadly rectangular retail space

WC facilities

A new modern aluminium shop front

Suspended ceiling, full rewire, LED lighting and air conditioning

May qualify for a substantial small business rates relief discount.



Leasehold £15,000 Per Annum

552 SqFt (51.28 SqM)

**Rateable Value 2017:** £12,750**The Junction , Horbury Junction , Wakefield, WF4 5FH****AVAILABLE****WORK SPACE TO LET ON FLEXIBLE TERMS**

Suites from 147 sq ft - 7000 sq ft

Ample on site car parking

New Wellbeing Centre available from Jan 2019

Roof top garden terrace

Artisan Café opening early 2019



Leasehold On Application

147 - 7,000 SqFt (13.66 - 650.3 SqM)

**Rateable Value 2017:****Riverside Works, Thornes Lane, Wakefield, West Yorkshire, WF1 5RW****UNDER OFFER****POTENTIAL SHOWROOM/TRADE COUNTER AND ADJOINING WAREHOUSE**

Located within a prominent commercial area

**TO LET**

On site car parking

Close to the Hepworth Gallery

Please contact our office for further information

Would suit a variety of uses such as a trade counter, showroom, offices \*subject to consents



Leasehold £34,000 Per Annum

4,253 SqFt (395.1 SqM)

**Rateable Value 2017:** £86,000**Suite 6 Westleigh House Hub, Wakefield Road, Denby Dale, Huddersfield, HD8 80J****AVAILABLE****REFURBISHED OFFICE TO LET**

426 sqft

Superb refurbishment with excellent break out facilities

Flexible agreements

Excellent on site car parking

Please contact our office for further information



Leasehold £80.00 Per week

426 SqFt (39.58 SqM)

**Rateable Value 2017:** £2,750



**7/17 Exchange Street, Normanton, WF6 2AA****AVAILABLE****SUBSTANTIAL TOWN CENTRE**

Open plan

**OFFICE SPACE TO LET**

Ready for immediate occupation

Electric heating and suspended ceiling

Ideal for variety of uses

Please contact our office for further information



Leasehold £12,000 Per Annum

1,429 SqFt (132.75 SqM)

**Rateable Value 2017:** £7,200**Ground Floor, Dearden House, Ventnor Way, Ossett, West Yorkshire, WF5****AVAILABLE****8NT****GROUND FLOOR OFFICE SPACE TO LET**

Pleasant working environment

Feature brickwork and good natural light

Convenient for Ossett town centre

4 On site car parking spaces

Good access to junction 40 of the M1 motorway



Leasehold £12,000 Per Annum

1,132 SqFt (105.16 SqM)

**Rateable Value 2017:****Suite 5 Westleigh House Hub, Wakefield Road, Denby Dale, Huddersfield,****AVAILABLE****HD8 80J****REFURBISHED OFFICE TO LET**

125 sq ft (11 sq m) to 847 sq ft (78.68 sq m)

Superb refurbishment with excellent break out facilities

Flexible agreements

Excellent on site car parking

Please contact our office for further information



Leasehold £100.00 Per week

375 SqFt (34.84 SqM)

**Rateable Value 2017:****Former Palace Bingo, Station Lane, Featherstone, WF7 5BJ****AVAILABLE****TOWN CENTRE DEVELOPMENT SITE**

With planning permission for 4 town houses, 4 retail units and 6 apartments

**FREEHOLD FOR SALE**

Approx 0.27 acres

The site can be identified by our for sale board

main road location

Please contact our office for further information



0.27 Acres (0.11 Hectares)

Freehold £275,000 Freehold

**Rateable Value 2017:**

**Ossett Health Centre , New Street, Ossett, WF5 8AG****UNDER OFFER****NHS HEALTH CENTRE FOR SALE**

Superb position in the centre of Ossett

Excellent redevelopment potential

Site area 1.5 acres

Please call our office for further information



1.5 Acres (0.61 Hectares)

Freehold £1,500,000 Freehold

**Rateable Value 2017:****Woodhead House, Car Parking Spaces, 8-10 Providence Street, Wakefield, WF1****AVAILABLE****3BG****CITY CENTRE CONTRACT CAR PARKING**

Single and Tandem spaces available

Flexible licence agreements

3 locations available

Quarterly rents

Please call for availability



Leasehold £1,260 Per Annum

1 - 2 Parking Space (1 - 2)

**Rateable Value 2017:****Suite 9 Westleigh House Hub, Wakefield Road, Denby Dale, Huddersfield,****AVAILABLE****HD8 80J****REFURBISHED OFFICE TO LET**

Additional space from 125 sq ft (11 sq m) to 847 sq ft (78.68 sq m)

Superb refurbishment with excellent break out facilities

Flexible agreements

Excellent on site car parking

Please contact our office for further information



Leasehold £80.00 Per week

228 SqFt (21.18 SqM)

**Rateable Value 2017:****Suite 1a Vincent House, Westgate, Wakefield, West Yorkshire, WF2 9SR****AVAILABLE****Well appointed self contained offices**

Conveniently placed for city centre and railway station

Wc facilities with each suite

Prominent position



Leasehold £55.00 Per week

370 SqFt (34.37 SqM)

**Rateable Value 2017:** £3,000

**Suite 8 Westleigh House Hub, Wakefield Road, Denby Dale, Huddersfield, HD8 80J****AVAILABLE****REFURBISHED OFFICE TO LET**

125 sq ft (11 sq m) to 847 sq ft (78.68 sq m)

Superb refurbishment with excellent break out facilities

Flexible agreements

Excellent on site car parking

Please contact our office for further information



Leasehold £90.00 Per week

260 SqFt (24.15 SqM)

**Rateable Value 2017:** £2,200**Crowther House, Thornhill Street, Wakefield, WF1 1PL****AVAILABLE****OFFICE INVESTMENT FOR SALE**

Fully let offices

Modern open plan office accommodation over three floors

DDA compliant with passenger lifts

Currently has a rental income of £178,750 per annum

Parking space for 14 cars



16,358 SqFt (1,519.66 SqM)

Freehold £1,575,000 Freehold

**Rateable Value 2017:** £199,000**Trinity Walk Offices, Unit G37b, Market Walk, Wakefield, WF1 1QR****AVAILABLE****FULLY FURNISHED AND WORK READY OFFICES TO LET**

Located in the heart of Wakefield city centre

Open plan or cellular layout

World-class IT and comms infrastructure

Meeting rooms and kitchen facilities

Great access to bus and train stations



Leasehold On Application

41 - 228 SqFt (3.81 - 21.18 SqM)

**Rateable Value 2017:****Empire House, Business Centre, Wakefield Road, Dewsbury, Kirklees, WF12 8DJ****AVAILABLE****SERVICED BUSINESS CENTRE TO LET**

Prominent position in the heart of Dewsbury

Flexible lease terms with all inclusive rents

Optional additional services, including office planning, decorating and cleaning

Convenient for bus and train services

Good access to both M62 and M1 motorways



Leasehold £14.00 Per Sq ft

51 - 367 SqFt (4.74 - 34.09 SqM)

**Rateable Value 2017:**

**Empire House, Upper Ground Floor Block B, Wakefield Road, Dewsbury,  
Kirklees. WF12 8DJ**
**AVAILABLE****QUALITY OFFICE SPACE TO LET**

Prominent position in the heart of Dewsbury

Flexible lease terms

Optional additional services, including office planning, decorating and cleaning

Convenient for bus and train services

Good access to both M62 and M1 motorways



Leasehold £18,500 Per Annum

2,150 SqFt (199.74 SqM)

**Rateable Value 2017:** £13,000
**47 Northgate, Wakefield, WF1 3BH**
**AVAILABLE****CITY CENTRE RETAIL UNIT TO LET**

Useful upper parts

Prominent main road position

Please contact our office for further information



Leasehold £18,000 Per Annum

1,325 SqFt (123.09 SqM)

**Rateable Value 2017:** £14,750
**Second Floor, 2 Chancery Lane, Wakefield, WF1 2SS**
**AVAILABLE****SUPERB SECOND FLOOR OFFICE TO LET**

Flexible terms

Shared kitchen &amp; Wc facilities

Situated in the heart of the business district

Realistic rental

Please contact our office for further information



Leasehold £70.00 Per week

286 SqFt (26.57 SqM)

**Rateable Value 2017:**
**14-16 Marygate, Wakefield, WF1 1NX**
**AVAILABLE****PROMINENT RETAIL UNIT TO LET**

With useful upper parts

Excellent display window

Ready for immediate occupation

Close to all city centre amenities

Please contact our office for further information



Leasehold £17,000 Per Annum

1,491 SqFt (138.51 SqM)

**Rateable Value 2017:** £23,750



**28 Wood Street, Wakefield, West Yorkshire, WF1 2ED****AVAILABLE****MODERN RETAIL UNIT TO LET**

NEWLY REFURBISHED

Ground floor only

Large display window

Visible trading position

Please contact our office for further information



Leasehold £12,000 Per Annum

777 SqFt (72.18 SqM)

**Rateable Value 2017:** £18,000**54 Northgate, Wakefield, Yorkshire, WF1 3AN****AVAILABLE****RETAIL/OFFICE UNIT TO LET**

With A1 and A2 planning

Modern aluminium shop front

Air con and gas central heating

Wc and kitchen facilities

Please contact our office for further information



Leasehold £18,000 Per Annum

784 SqFt (72.83 SqM)

**Rateable Value 2017:** £12,500**44 - 46 Northgate, Wakefield, West Yorkshire, WF1 3AN****AVAILABLE****SUPERB CITY CENTRE RETAIL UNIT**

Prominent double fronted retail unit

**\*Ideal for a mini-supermarket**

Suitable for a wide variety of A1 retail uses

Open plan layout

Other nearby traders include Red Rock Recruitment, Manning Stainton, Quabana restaurant and Clark &amp; Partners.



Leasehold £28,000 Per Annum

1,741 SqFt (161.74 SqM)

**Rateable Value 2017:** £28,750**Calder House, Healey Road, Ossett, Yorkshire, WF5 8LN****AVAILABLE****SUPERB OFFICE ACCOMMODATION WITH APPROX. 22 CAR PARKING SPACES**

Detached victorian building with approx. 22 car parking spaces

**TO LET/MAY SELL**

Three phase electricity, comfort cooling and UPVC double glazing

Useful basement area

Located just off Healey Road close to Ossett Town Centre

Please contact our office for more information



Leasehold £30,000 Per Annum

2,578 SqFt (239.5 SqM)

Freehold £375,000 Freehold

**Rateable Value 2017:** £22,250

**Unit 1-G3, Caldervale Road, Wakefield, West Yorkshire, WF1 5PE****AVAILABLE****GROUND FLOOR OFFICE/STORES**

Flexible accommodation

**TO LET**

Suitable for a variety of users

Convenient location for city centre and motorway network

Realistic rental

Contact our office for further information



Leasehold £5,200 Per Annum

1,496 SqFt (138.98 SqM)

**Rateable Value 2017:** £10,250**Unit 3, Navigation Yard, Wakefield, West Yorkshire, WF1 5PQ****UNDER OFFER****PRESTIGIOUS GRADE II LISTED OFFICE TO LET**

Newly refurbished

Perimeter trunking

Convenient for Kirkgate railway station

Superb bright and airy space

On site car parking for approx. 6 cars



Leasehold £16,500 Per Annum

1,413 SqFt (131.27 SqM)

**Rateable Value 2017:** £10,500**Unit 4, Dearne Valley Industrial Estate, Park Mill Way, Clayton West, Huddersfield, Yorkshire. HD8 9XJ****AVAILABLE****SUPERB COMMERCIAL SPACE**

Gas central heating, UPVC double glazing

**TO LET**

12 Car parking spaces

Close to M1 motorway

Please contact our office for more information



Leasehold £27,500 Per Annum

3,116 SqFt (289.48 SqM)

Freehold £285,000 Freehold

**Rateable Value 2017:** £29,900**Stonechapel House 28a, Thornhill Road, Middlestown, Wakefield, WF4 4PD****AVAILABLE****OFFICES WITH STORES**

Very well presented

**FOR SALE**

Feature stonework with open timbers above

Convenient location partway between Wakefield and Huddersfield

Car parking space to the front

please contact our office for further information



Leasehold £12,000 Per Annum

1,279 SqFt (118.82 SqM)

Freehold £159,500 Freehold

**Rateable Value 2017:** £4,850

**38 Wood Street, Wakefield, West Yorkshire, WF1 2HB****AVAILABLE****RETAIL UNIT TO LET**

With A1 and A2 planning permission

Would suit various uses

Kitchen &amp; Wc facilities to the rear



Leasehold £12,000 Per Annum

720 SqFt (66.89 SqM)

**Rateable Value 2017:** £9,700**Unit 4 Calder House, Caldervale Road, Wakefield, West Yorkshire, WF1 5PE****AVAILABLE****FLEXIBLE FIRST FLOOR OFFICE TO LET**

Realistic rental levels

Immediate occupation

Close to the city centre

Short drive from junction 39 of the M1 motorway

For further information contact our office on 01924 291500



Leasehold £3,000 Per Annum

220 SqFt (20.44 SqM)

**Rateable Value 2017:****Suite 16 Westleigh House, Denby Dale Road, Huddersfield, West Yorkshire, HD8 80J****AVAILABLE****SUPERB GROUND FLOOR OFFICE SUITE**

Good onsite car parking

**TO LET**

Recently refurbished accommodation

Secure site with CCTV monitoring

Self contained with kitchen and Wc facilities

Very pleasant working environment



Leasehold £7,000 Per Annum

600 SqFt (55.74 SqM)

**Rateable Value 2017:** £6,200**Wakefield Road, Ossett, West Yorkshire, WF5 9JU****AVAILABLE****SUPERB FIRST FLOOR OFFICES**

With good on site car parking

**TO LET**

Ready for immediate occupation

Toilet facilities

Convenient for all town centre facilities

Junction 40 of the M1 is less than one mile away



Leasehold £12,000 Per Annum

1,449 SqFt (134.61 SqM)

**Rateable Value 2017:** £9,070

**Suite 1, Cross Street House, Cross Street, Wakefield, West Yorkshire, WF1 3BW AVAILABLE****CITY CENTRE OFFICES**

Recently refurbished

Open plan accommodation with wc facilities at second floor

Visible location

Private parking spaces available via the landlord

Excellent access to the motorway network



Leasehold £12,500 Per Annum

984 SqFt (91.41 SqM)

**Rateable Value 2017:** £7,100**8a Caldervale Road, Wakefield, West Yorkshire, WF1 5PE AVAILABLE****RETAIL SHOWROOM/TRADE COUNTER UNIT TO LET**

First floor office accommodation

Ground floor retail space with roller shutter door

Concrete floor

Close to city centre

For further information, contact our office on 01924 291500



Leasehold £16,000 Per Annum

2,241 SqFt (208.19 SqM)

**Rateable Value 2017:** £10,000**20 Wood Street, Wakefield, West Yorkshire, WF1 2ED AVAILABLE****FREEHOLD SHOP/OFFICES FOR SALE/MAY LET**

3 Story accommodation

With first and second floor offices

Very prominent trading position

Would ideally suit any user requiring offices with a ground floor retail presence

Please contact our office for further information



Leasehold On Application

558 SqFt (51.84 SqM)

Freehold £110,000 Freehold

**Rateable Value 2017:** £4,850**70 Northgate, Wakefield, Yorkshire, WF1 3AP AVAILABLE****PROMINENT RETAIL/OFFICE UNIT**

Currently trading as an estate agents

**TO LET**

Ground floor with first and second floor storage/ office

Situated within a prominent position within the City Centre

Other nearby occupiers and services include Manning Stainton Estate Agents, Lindley Simpson Estate Agents, Qubana Restaurant,

Contact our office for further information



Leasehold £24,000 Per Annum

1,525 SqFt (141.67 SqM)

**Rateable Value 2017:** £18,250



**11 Barstow Square, Wakefield, West Yorkshire, WF1 2SF****UNDER OFFER****FREEHOLD OFFICES FOR SALE**

Would suite owner occupier or investor

Three storey accommodation

Residential potential subject to consents

City centre location

Good access to M1 motorway via junction 41



1,000 SqFt (92.9 SqM)

Freehold £120,000 Freehold

**Rateable Value 2017:****Suite 1b Vincent House, Westgate, Wakefield, West Yorkshire, WF2 9SR****AVAILABLE****Well appointed self contained offices**

Conveniently placed for city centre and railway station

Wc facilities with each suite

Prominent position



Leasehold £55.00 Per week

370 SqFt (34.37 SqM)

**Rateable Value 2017:****Old Town Hall, Ground Floor Office Suite, Crown Court, Wakefield, WF1 2SU****AVAILABLE****SUPERB LANDMARK OFFICE BUILDING TO LET**

Grade II listed building

Situated within the heart of Wakefield's professional district

Good location for railway and bus station

M1 less than 3 miles away

Functional modern working environment



Leasehold £10,500 Per Annum

960 SqFt (89.18 SqM)

**Rateable Value 2017:** £6,900**Suite 7, Vincent House, 136 Westgate, Wakefield, West Yorkshire, WF2 9SR****AVAILABLE****Well appointed self contained office suite To Let**

Grade II listed building

Well appointed accommodation

Conveniently placed for city centre and Railway Station

Integral WC and wash handbasin

BT input



Leasehold £50.00 Per week

311 SqFt (28.89 SqM)

**Rateable Value 2017:**

**Suite 2, Vincent House, 136 Westgate, Wakefield, West Yorkshire, WF2 9SR**

**AVAILABLE**

Well appointed self contained office suite To Let

Grade II listed building

Well appointed accommodation

Conveniently placed for city centre and Railway Station

Integral WC and wash handbasin

BT input



Leasehold £115.00 Per week

770 SqFt (71.53 SqM)

**Rateable Value 2017:** £6,200